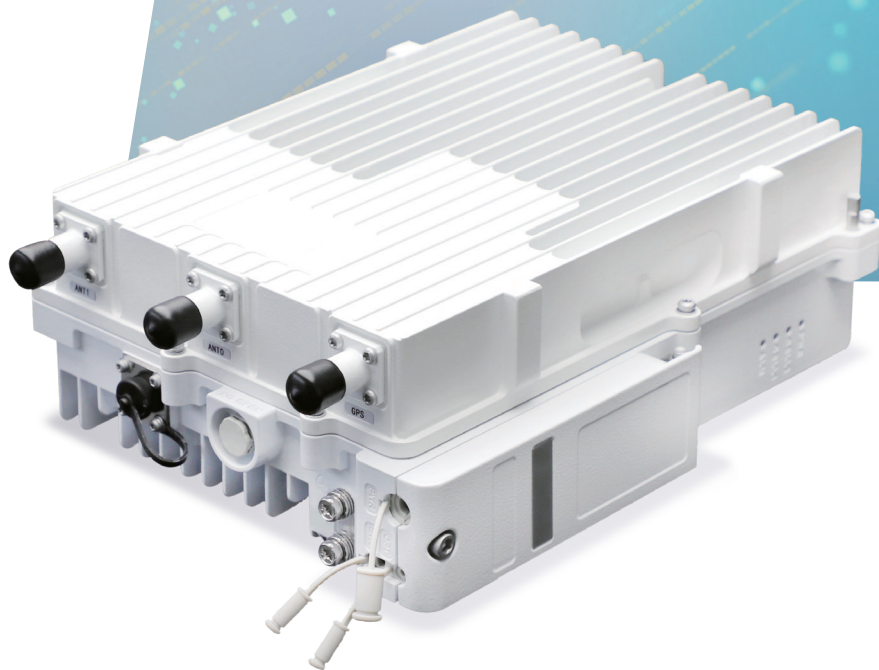


Inventec NX-R2028

Open, Smart, Agile



Highlights

- 5G integrated small cells.
- Standard NR FR1 Band n79.
- 3GPP R15 standard effectively improves network performance and provides high-quality services.
- Supports up to 1000 users.
- Supports Stand Alone (SA) mode.

Introduction

Inventec NX-R2028 helps operators to enhance the coverage performance of 5G networks effectively, improve the capacity of 5G networks and eliminate the blind district, it also can help to reduce the system power consumption.

Provide 5G advantage for strengthening variety of applications

The new generation 5G ISC (Integrated Small Cell) NX-R2028 has a transmission power that complies with regulatory limit and enhances performance for meeting

high density network requirement. User can obtain low latency and up to 1,000 devices connectivity. It is the best 5G integrated small base station in telecom industry. NX-R2028 integrates CU, DU and RU into a lightweight all-in-one machine which greatly reduces the complexity of network deployment and has comprehensive advantages such as flexibility and rapid deployment.

Tiny, easy to install, does not take up a lot of space

NX-R2028 is able to fulfill efficient and regional wireless communication coverage, such as offices; communities or shopping malls. Adopting the latest 5G technology, it provides faster network speeds and more stable connection quality with the advantages of low latency and high capacity. NX-R2028 is very compact in size and lightweight, making installation simple and convenient. It does not take up a lot of space, so it can be easily installed and deployed anywhere. In addition, small base stations also have good scalability and reliability, and can effectively cope with simultaneous access by a large number of users and improve the stability and availability of the network. Therefore, small base stations have become one of the important components in the 5G era, bringing people a faster, more stable and convenient wireless communication experience.

About Inventec

Since its founding in 1975, Inventec has grown from an early manufacturer of computers and telephones to a leading design manufacturer of notebooks, servers, and wireless communication products. With the advent of the 5G generation, Inventec is expanding its capabilities in 5G private network system integration and architecture, transforming its world-class manufacturing facilities into 5G smart factories.

Inventec Corporation

No.66, Hougang St., Shilin Dist., Taipei City 111059, Taiwan
Tel : 886-2-2881-0721 Ext : 23464
Email : CCS5G_support@inventec.com

[Learn more of Inventec 5G Smart Factory](#)



NX-R2028 | Product Specifications

| | | | |
|-----------------------------|--|----------------------------------|---|
| Standard | 5G NR TDD (3GPP R15) | LED Indicators | 4 x status LED PWR / ACT / RUN / ALM |
| Frequency Band | n79 (4800 MHz – 4900 MHz) | External RF Antenna | 2T2R N-Type connectors for external high-gain antenna |
| Channel Bandwidth | n79: 20/40/60/100 MHz | Integrated RF Antenna | N79 2T2R 14.5dBi antenna <ul style="list-style-type: none"> Horizontal Beam width: 65±5° Vertical Beam width: 15° Polarization: ±45° |
| Multiplexing | 2x2 MIMO (DL : 2L, UL : 2L) | GPS Antenna | External GPS antenna, N-Type connector |
| Security | Radio : SNOW 3G/AES-128 Backhaul : IPsec (X.509 AES-128, AES-256, SHA-128, SHA-256) | MTBF | ≥ 150000 hours |
| User Capacity | Up to 1000 users | Surge Suppression | Network interface : 1KV Power Interface : Differential mode : 2KA; Common mode : 4KA |
| Latency | Round-trip delay (RTD) less than 10 milliseconds | Lightning Protection | Power Interface : Differential mode : ±10 KA; Common mode : ±20 KA |
| Receive Sensitivity | -95 dBm (per channel) | MTBF | ≥ 150000 hours |
| Modulation | UL : MCS0 (QPSK) to MCS27 (256QAM) DL : MCS0 (QPSK) to MCS27 (256QAM) | MTTR | ≤ 1 hour |
| Transmit Power Range | 0 to 40 dBm per channel (combined +43dBm, configurable) (1 dB interval) | Ingress Protection Rating | IP65 |
| Quality of Service | Complied with 3GPP standard 5G QoS Identifier (5QI) | Operating Temperature | -22° F to 131° F / -30° C to 55° C |
| ARQ/HARQ | Supported | Storage Temperature | -40° F to 149° F / -40° C to 65° C |
| Synchronization | GPS | Humidity | 2% to 95% RH |
| Ethernet Interface | 1x optical (SFP+) 1x RJ-45 Ethernet interface (1 GE) | Atmospheric Pressure | 70 kPa to 106 kPa |
| Power Supply | 90VAC to 264VAC, 47Hz to 63Hz or -40VDC to -57VDC, nominal -48VDC | Power Consumption | Maximum 150W |
| Protocols Used | IPv4/IPv6, UDP, TCP, ICMP, NTP, SSH, IPsec, TR-069, HTTP/HTTPS, DHCP | Weight | With bracket : about 16.5lbs / 7.5kg Without bracket : about 15.9lbs / 7.2kg |
| Network Management | IPv4 / IPv6, HTTP / HTTPS, TR-069, SSH, Embedded 5GC | Dimensions (HxWxD) | 13.1 x 9.4 x 4.3 inches 333 x 240 x 109 millimeters |
| VLAN/V x LAN | 802.IQ / VxLAN | Dimensions (HxWxD) | Pole or wall mount |

NX-R2028 | Peak Data Rate with UL256QAM

| 100 MHz | DL (Mbps) | UL (Mbps) |
|-------------------------------------|-----------|-----------|
| DDDSUUDDDD (S 6:4:4) | 648 | 160 |
| DDDS1U UDS2UU (S1 6:4:4, S2 10:4:0) | 445 | 406 |

Inventec logos are trademarks or registered trademarks of Inventec Corporation. Inventec reserves the right to modify this document, the Specifications and photos from time to time without notifying the Party. The entire materials provided herein are for reference only. All title and intellectual property rights in and to this document, the Specifications and photos contained therein, remain the exclusive property of Inventec or its suppliers.